

Rocky Mountain Home Series

Single and Sectional Homes



www.sriregent-northland.ca

Rocky Mountain Home Series

Single and Sectional Homes



Green is more than a color at SRI - Regent Homes. Our factory built process minimizes waste of materials, transportation, fuel and power. The waste we do have is then sorted, and recycled into a host of other products. The advantage of building homes simultaneously means that product left from one home can be used in a home "down the line". This same product would probably end up being tossed out at a site built home. This not only reduces our costs but makes us better stewards of the earth we all share.



Advantages of Factory Built Housing

Guaranteed Price - Once the order is firm, so is the price.

Quality Control - The CSA inspection process guarantees that your home has been inspected and tested at every level to ensure our high quality standards.

Flexible Design - There is a much higher degree of flexibility than you might have thought could happen in a factory built design and Regent is the best at it.

Reduced Subtrades - A growing challenge in the work place is to find qualified, reliable sub-trades to complete on site projects. Off-site manufacturing greatly reduces these issues.

Reduced Footprint - One of the greatest benefits of having your home built in a manufacturing facility is the consolidation of labour and building materials at the factory. Having the majority of the work done offsite greatly reduces the amount of vehicle traffic, noise and pollution at the location your home will be placed. The time frame that contractors need to be onsite is significantly lowered - lessening the impact for you and your neighbors and speeding up the time frame to when you can move into your new home.

Reduced Waste - Factories buy large quantities of lumber and other building materials, much of which is ordered to exact fit requirements, thereby reducing waste. Waste that does occur is 50-70% less than when a building is constructed on site and can readily be recycled or disposed of properly.

Energy Footprint - Buildings arrive at destination in one or more large modules that are 85% or greater complete. On site construction activity and the time to completion is dramatically reduced. In addition, the pollutants contained in heating fuels, toxic adhesives and other waste materials that could negatively impact the environment and neighboring properties are dealt with properly at the factory level. Additionally, all of Regent's homes are built to meet or exceed the National Energy Codes (9.36) - ensuring that your new home is built to last and that it is an energy efficient dwelling.

Energy Performance - Climate controlled factory conditions and assembly line procedures optimize thermal insulation & air/vapour barrier installation, resulting in a tighter and better insulated builder's envelope that requires less energy to heat and cool. For you, that means lower monthly bills!

Reduced Cost - Our factory built process can save you up to 25% on your building costs through plant efficiencies, large buying power, reduced waste and reduced bridge financing costs.



BEST VALUE

Rocky Mountain Home Series

Single and Sectional Homes

STANDARDS & SPECIFICATIONS

EXTERIOR

- ✓ Colour coordinated metal fascia
- ✓ Vinyl siding & white vinyl soffit
- ✓ 4/12 pitch roof with non-residential eaves (3 sides) and 16" eave on HE (14' wide)
- ✓ 4/12 pitch hinged roof with 16" eaves (4 sides) (24' and 28' wide)
- ✓ Exterior GFI receptacle - front door
- ✓ Exterior FF tap – kitchen sink
- ✓ 30-year architectural fiberglass shingles
- ✓ 7/16" roof sheathing
- ✓ Perimeter ventilation
- ✓ Separate receptacle for heat tape
- ✓ 2 x 8 floor joists 16" o.c.
- ✓ 3/8" wall sheathing
- ✓ Insulation: R22 walls; R40 ceiling; R32 floor
- ✓ 2" x 6" exterior walls with OSB both sides
- ✓ 12" tubular steel frames with detachable hitch
- ✓ 19/32" T&G subfloor
- ✓ 8' ceiling height
- ✓ Engineered roof trusses to 2.7 KPA snow load
- ✓ Insulated steel exterior doors, 36" front and rear (where possible) with peepholes and deadbolts with lever door handles
- ✓ Coach lights at all exterior doors
- ✓ LowE PVC slider windows & sills w/ screens
- ✓ Blue skin windows

INTERIOR

- ✓ 2x4 interior walls
- ✓ Textured ceiling throughout
- ✓ Decorative vinyl covered drywall
- ✓ 6 mil. vapour barrier includes switches & receptacles
- ✓ Plush carpet in LR, MBR (Hall & FR where applicable on sectionals)
- ✓ Quality vinyl floor covering
- ✓ Cathedral ceilings in LR, DR, KIT (14')
- ✓ Cathedral throughout (24' and 28')
- ✓ Ceiling lights in all bedrooms
- ✓ Wire for ceiling light in living room
- ✓ Solid shelving in all closets
- ✓ White embossed interior doors with lever handles
- ✓ 4" ceramic tile backsplash at kitchen and vanities with tile edging
- ✓ Vinyl wrap moulding throughout

KITCHEN

- ✓ Adjustable shelves in all cabinets - (2) upper & (1) lower
- ✓ Double stainless-steel sink
- ✓ Roller door slides on all drawers
- ✓ Microwave cabinet w/ separate circuit (most models)
- ✓ PVC cabinet doors
- ✓ 18 cu. ft. frost free refrigerator
- ✓ 30" electric range with clock and timer
- ✓ 2-speed range hood w/ light & fan vented to exterior
- ✓ White kitchen appliances
- ✓ Single lever faucet with vegetable sprayer
- ✓ Crown moulding on cabs
- ✓ Communication box (empty) – kitchen area
- ✓ Upper corner cab - narrow reed glass

BATHROOM

- ✓ Exhaust fan with humidistat in main bath
- ✓ Exhaust fan in ensuite on separate switch
- ✓ Towel bar and towel ring (most models) in each bath
- ✓ Cosmetic box in main bath
- ✓ Showerhead and shower rod in all baths
- ✓ GFI receptacle in all baths
- ✓ Walled tub/shower with single lever pressure balanced faucet in all baths
- ✓ Single lever faucets in all baths
- ✓ Theatrical lights in all baths
- ✓ Dual flush toilets

UTILITIES

- ✓ Plumbed and wired for washer/dryer
- ✓ High efficiency gas furnace w/ electric ignition
- ✓ Dryer vent rough in
- ✓ 50 GAL. Electric hot water tank
- ✓ Overhead solid shelf at washer/dryer area
- ✓ Insulated lines in HWT cavity

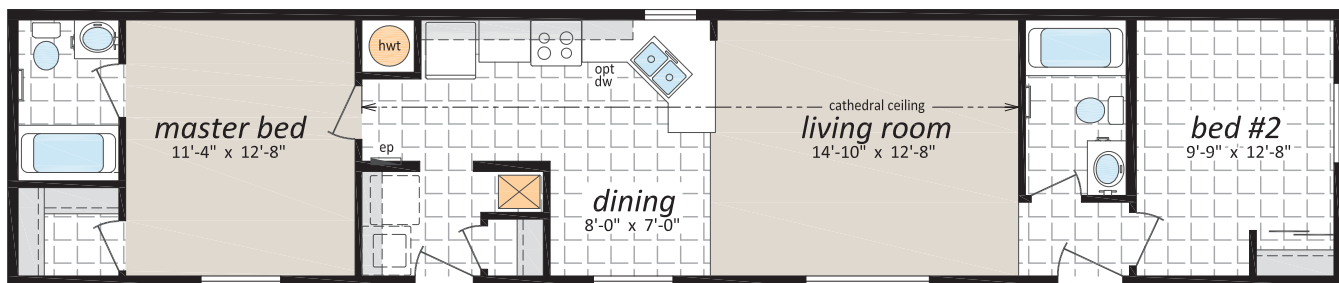
MISCELLANEOUS

- ✓ Electric smoke/CO detector(s) to code
- ✓ 100-amp service panel
- ✓ Electrical conduit through floor
- ✓ White receptacles and switches
- ✓ Light bulb package
- ✓ Shut off valves, hammer arrestors, vacuum breakers, solar ready
- ✓ Pig tail, electrical
- ✓ Programmable thermostat
- ✓ Airtight Protocol

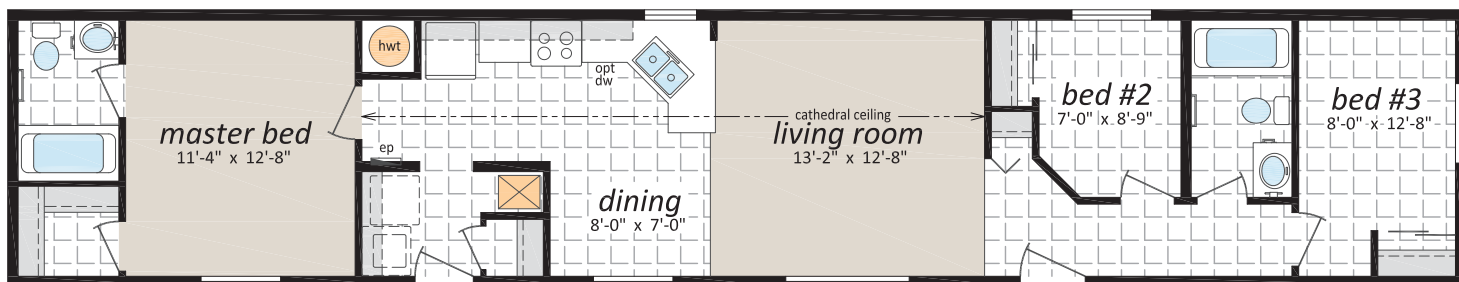
Rocky Mountain Home Series

Single and Sectional Homes

RM-1401, "Lewiston" 14' x 66' - 924 sq. ft.



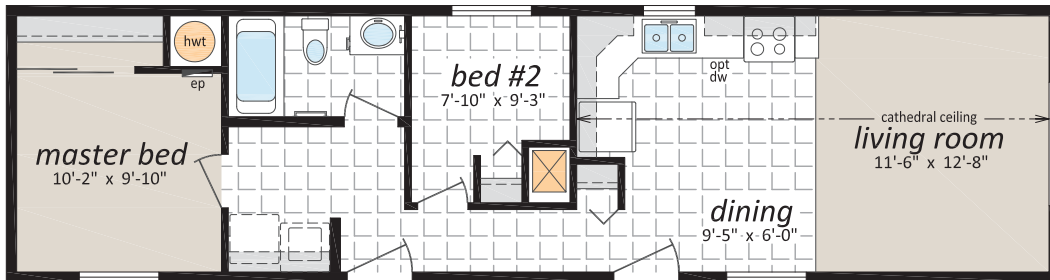
RM-1403, "Vermillion" 14' x 72' - 1,008 sq. ft.



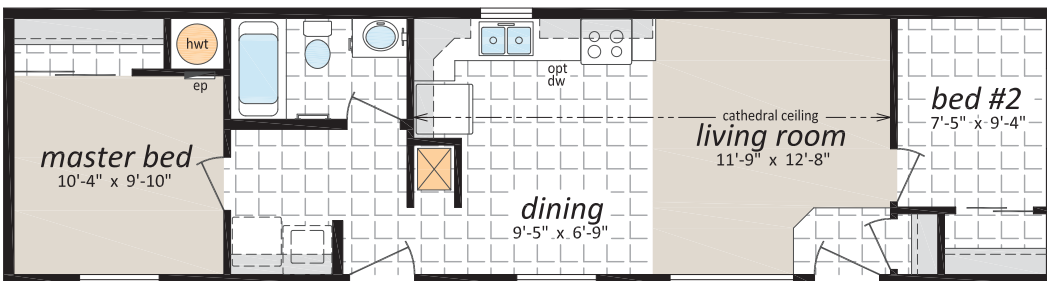
Rocky Mountain Home Series

Single and Sectional Homes

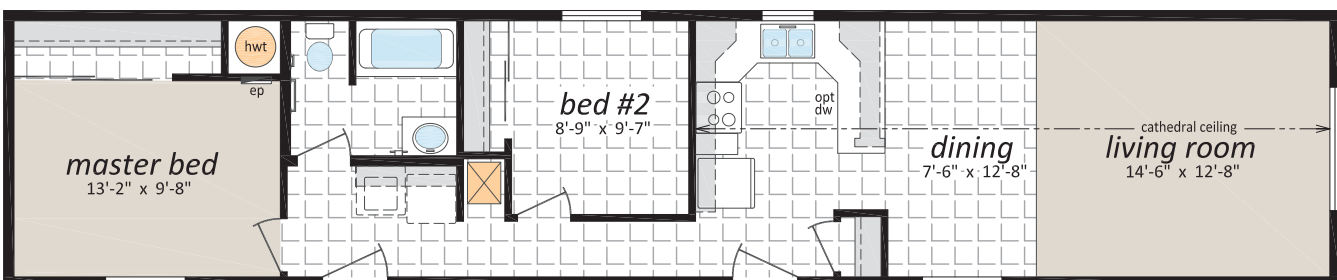
RM-1405, "Sundance" 14' x 52' - 728 sq. ft.



RM-1406, "Palliser" 14' x 52' - 728 sq. ft.



RM-1407, "Sawback" 14' x 66' - 924 sq. ft.

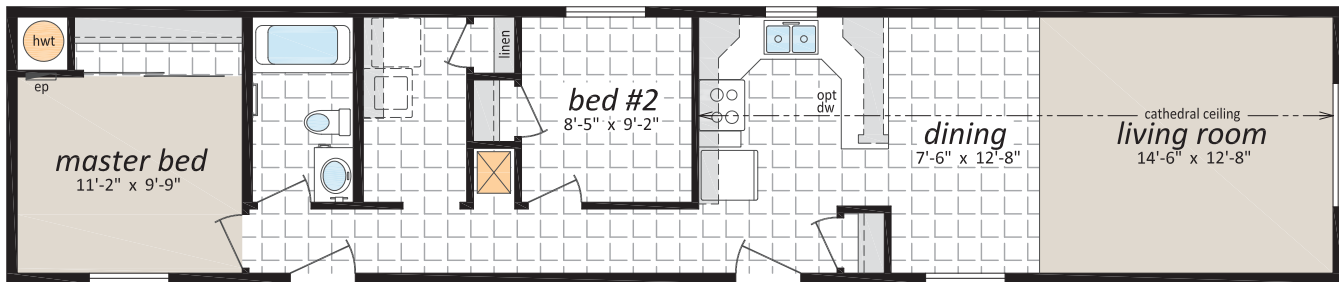


Rocky Mountain Home Series

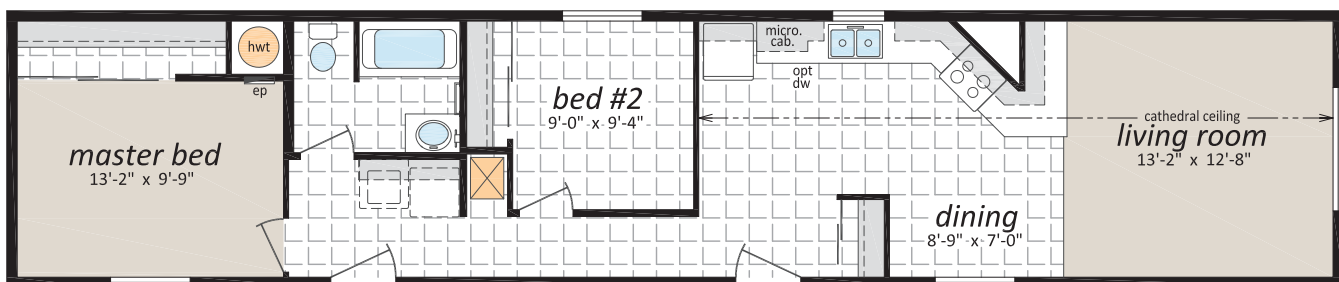
Single and Sectional Homes

RM-1409, "Maligne" 14' x 66' - 924 sq. ft.

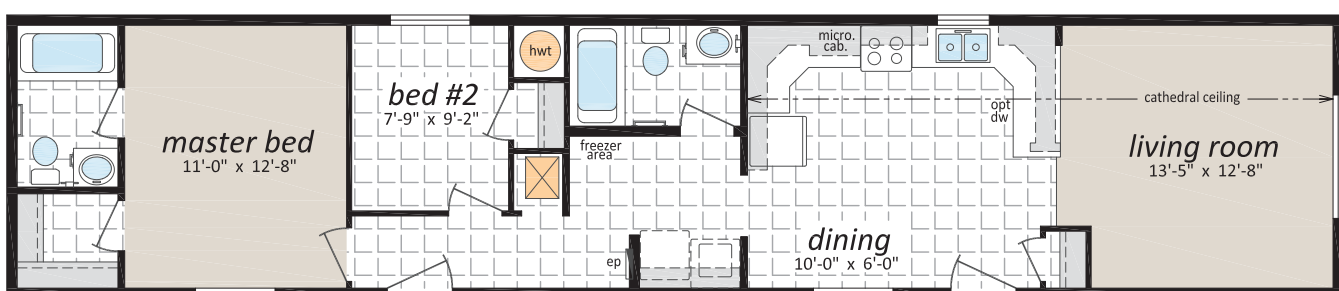
Note: rendering shown on coverpage



RM-1411, "Van Home" 14' x 66' - 924 sq. ft.



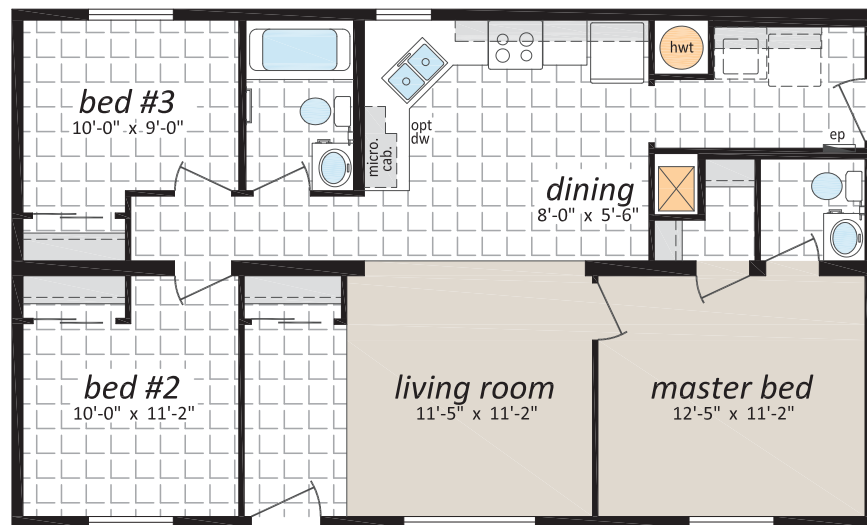
RM-1415, "Livingstone" 14' x 66' - 924 sq. ft.



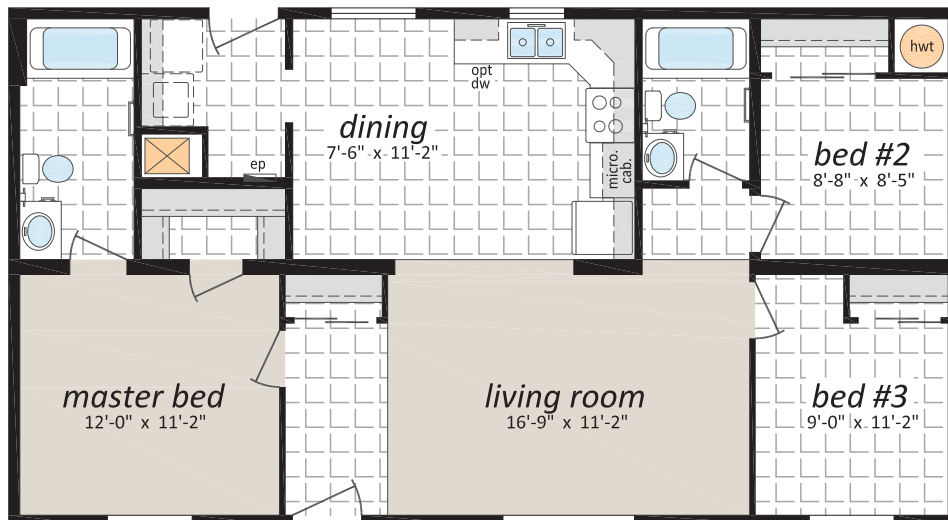
Rocky Mountain Home Series

Single and Sectional Homes

RM-501A, "Stanford" 24' x 40' - 960 sq. ft.



RM-503A, "Fairholme" 24' x 44' - 1,056 sq. ft.

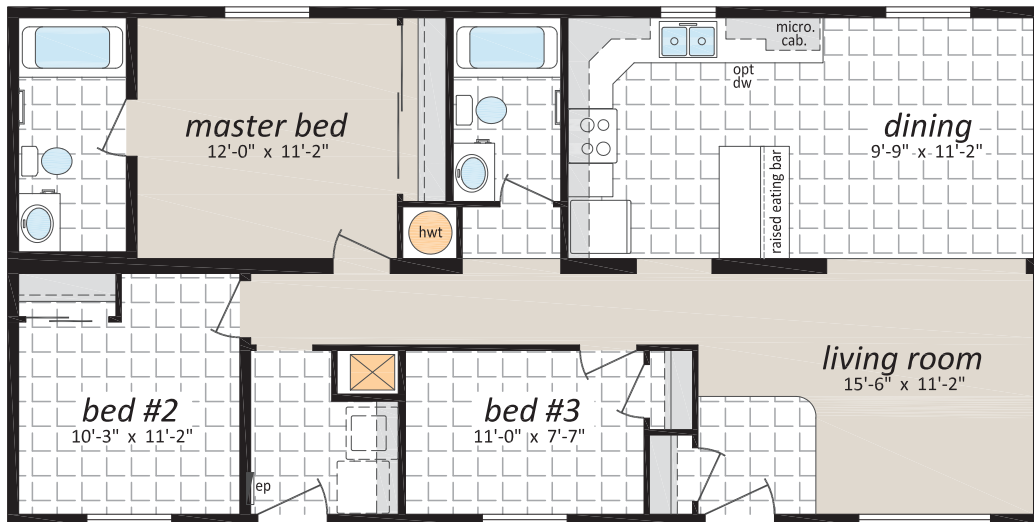


Rocky Mountain Home Series

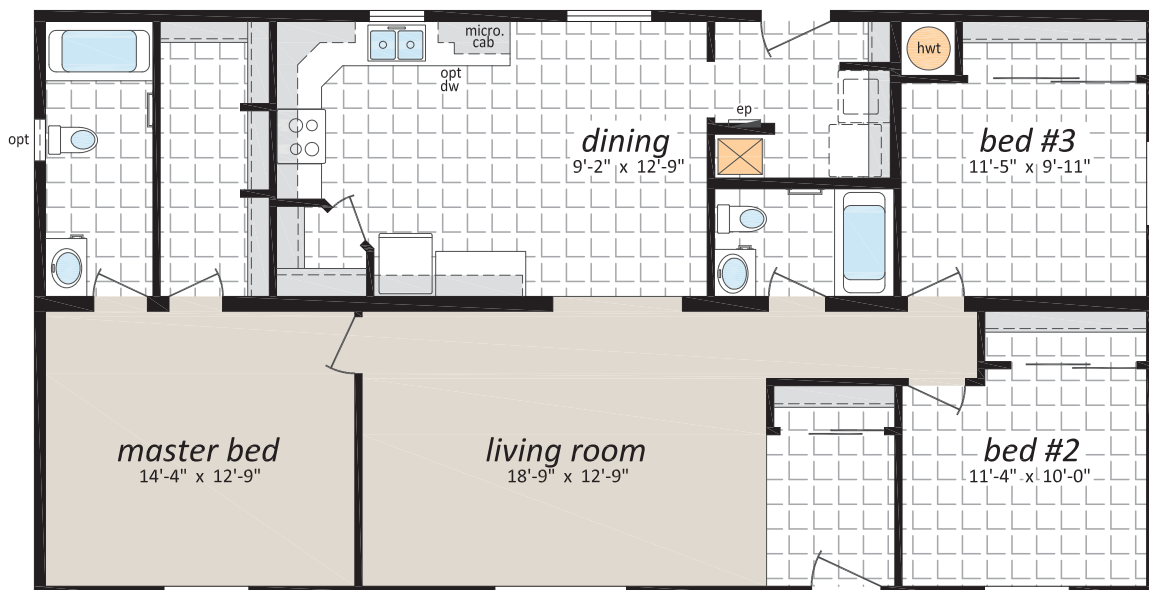
Single and Sectional Homes

RM-505A, "Kampart" 24' x 48' - 1,152 sq. ft.

Note: rendering shown on coverpage



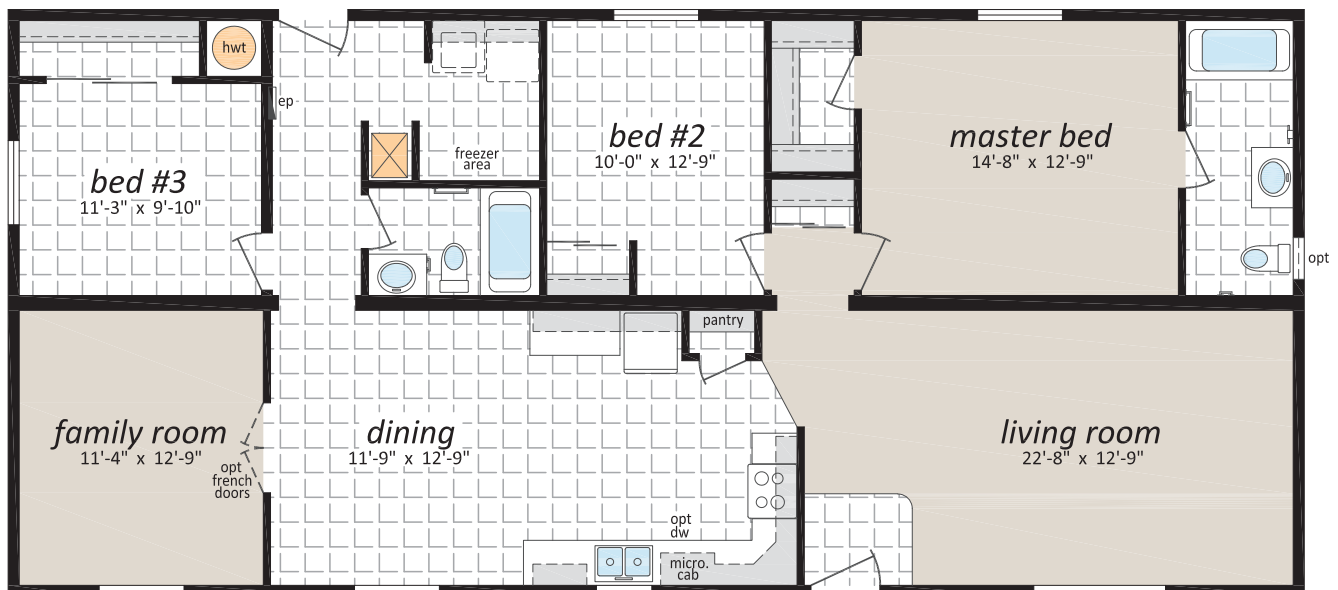
RM-2801, "Nakinassin"
28' x 52' - 1,430 sq. ft.



Rocky Mountain Home Series

Single and Sectional Homes

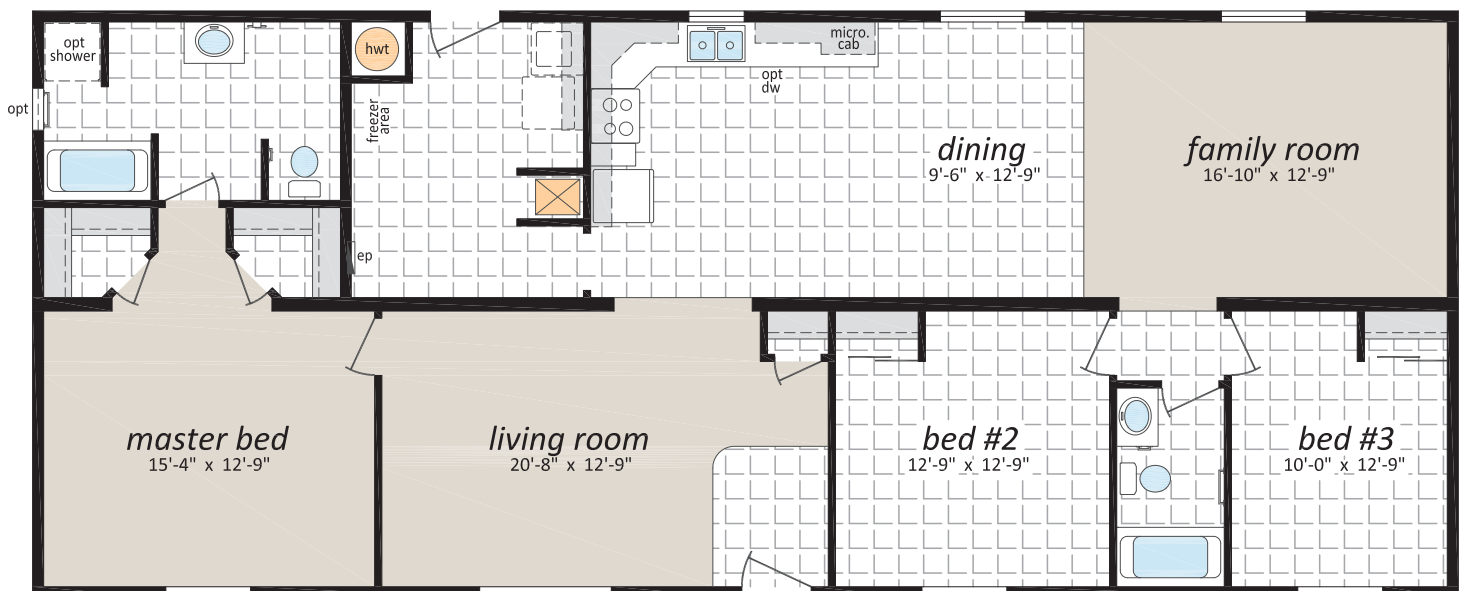
RM-2803, "Slate" 28' x 60' - 1,650 sq. ft.



Rocky Mountain Home Series

Single and Sectional Homes

RM-2805, "Misty" 28' x 66' - 1,815 sq. ft.





OPTIONAL FEATURES

EXTERIOR

- ☐ Shutters (Two Styles)
- ☐ Diamond Cut Ceilings
- ☐ Three and Four Light Bay Windows
- ☐ Octagon Windows
- ☐ Segmented Block Windows
- ☐ Lattice in Windows
- ☐ Skylights
- ☐ Patio, Garden and Cottage Doors
- ☐ Storm Doors
- ☐ Exterior Door with Half Round, 9 Lite or Franklin Insert
- ☐ Turbine Vents
- ☐ Door Chimes
- ☐ Exterior Recessed Pot Light(s)
- ☐ Extra Exterior GFI
- ☐ High Snow Load Roof

INTERIOR

- ☐ Fully Finished Drywall
- ☐ Media Room Package
- ☐ Laminate Flooring
- ☐ Upgrade Vinyl Floor Coverings
- ☐ French Doors
- ☐ Storage Bench
- ☐ Freezer Cabinets
- ☐ Soak Sink with Cabinet
- ☐ Utility Room Door
- ☐ Ceiling Fan with Lights
- ☐ Chandeliers
- ☐ Recessed Fluorescent Lights
- ☐ Under Counter Lighting
- ☐ Archways

BATHROOM

- ☐ 72" Tub/Shower
- ☐ Corner Oval Jetted Tub
- ☐ 2 Person Jetted Tub
- ☐ 36", 48" or 60" Shower c/w Glass Doors
- ☐ Handicap Toilet
- ☐ Tri-Mirror Medicine Cabinet
- ☐ Grab Bars
- ☐ Deluxe Shower Curtain
- ☐ Banjo Countertop on Vanity

KITCHEN

- ☐ Various Cabinet Door Selections
- ☐ Wand Style Deluxe Single Lever Kitchen Faucet
- ☐ Corner Glass Cabinet Doors
- ☐ Island Work Centre
- ☐ Planning Centre
- ☐ Lazy Susan
- ☐ Granite Composite Upgrade Sink
- ☐ Oak Counter Edging
- ☐ Black or Stainless Appliances
- ☐ Built-In Dishwasher
- ☐ Combination Microwave/Range Hood
- ☐ Eye Level Oven and Cook Top Range
- ☐ Self Cleaning Range
- ☐ Two Door Side by Side Refrigerator

UTILITIES

- ☐ Gas Fireplace c/w Air Circulating Fan
- ☐ 40 Gallon U.S. Gas Water Heater
- ☐ Forced Air Electric Furnace
- ☐ Air Conditioner-Ready Furnace
- ☐ Washer and Dryer
- ☐ Stacking Washer and Dryer
- ☐ Central Vacuum System
- ☐ Roughed in for Central Vacuum
- ☐ 200 Amp Service Panel
- ☐ Extra Telephone Jack(s)



Rocky Mountain

Home Series

Single and Sectional Homes



131 Stubb Ross Road
Lethbridge, AB T1K 7N3
www.sriregent-northland.ca

This is not a fully detailed specification. SRI Homes reserves the right to change specifications, designs, materials and suppliers without notice and without incurring obligation. Information contained herein is from data available at the time of printing. Square footage and dimensions are approximate. Photos and renderings may show optional features. 09/2022