



Factory Built Housing Product Guide



Where convenience, affordability & **QUALITY**
come together in your new home!



About REGENT HOMES

Regent Homes has been building high quality, factory built homes out of our Lethbridge facility since the early 70's. Today we are proud to be part of the Champion Home

Builders group, the largest factory built housing manufacturer in the world. Our facility produces between 1 to 3 homes per day using an experienced team of trained workers in a highly efficient and environmentally controlled atmosphere.



The famous "High Level Bridge" in Lethbridge, Alberta



**Regent Homes employs a dedicated workforce who have year round employment in a controlled environment.
Lethbridge, Alberta**

Regent brings jobs and economic growth to Lethbridge. It is a major employer in the community and provides a wonderful example of the pride of workmanship that is typical of all SRI Homes. Not all home sites and home buyers have the same needs/wants, so Regent's innovative building techniques and systems enable the home buyer to custom design the home of their dreams!

Regent builds residential, commercial, industrial and other forms of modular structures to fit the varied needs of the buyer.

As you view the following pages, you will be able to see just how diverse the types of homes offered by this factory are and after visiting one of the Retail Centres, you will soon see how affordable they are as well!



TABLE OF CONTENTS

About Regent Homes	Page 2
About our Retail Centres	Page 4
Building Green	Page 5
Advantages of Factory Built Homes	Page 6
HOME SERIES	
Northwood II Series of Homes - Single Module Homes	Page 7
Northwood II Series of Homes - Sectional Homes	Page 8
CJ 20' Series of Homes - Page One	Page 9
CJ 20' Series of Homes - Page Two	Page 10
CJ 22' Series of Homes - Page One	Page 11
CJ 22' Series of Homes - Page Two	Page 12
CJ 40" Series of Homes	Page 13
Niagara - Single Module, Series of Homes	Page 14
Niagara - Sectional Homes	Page 15
Residential Series of Homes	Page 16
RTM (Ready to Move) 24', Series of Homes	Page 17
Accent RTM, Series of Homes	Page 18
Decors	Page 19



About our **RETAIL CENTRES**

All of our Retail Home Centres are privately owned businesses with great reputations for customer care, integrity and attention to detail. As the oldest manufacturer of homes in Western Canada, our reputation and success rests in their hands, so we only choose the best.

We chose our Retailers before you did!

This document is designed to provide an overview of the products and services available from Regent Homes, but to get the most out of this, you will need to ask your sales representative to dig deeper into all of the other plans, options and features that are available to you.

How do you find one close to you? Check out our website at www.regenthomes.ca and click on "Find a Retailer". All the contact information will pop right up. Then drop in, give them a call or visit their website.

Numerous decor options including cabinetry, floor coverings and appliances.



Stacked cabinet that rests on the countertop providing additional storage space.



You will receive professional assistance with:

- ✓ Selecting Décor and Options that fit your personal tastes and lifestyle
 - ✓ Assistance with site inspections, service connections, foundations
 - ✓ Guidance with financing, mortgages
 - ✓ Turn Key Packages
 - ✓ Delivery of your home through fully licensed and insured transporters
- Customize, design and tweak your home plan so it's just right for you!**

GREEN

Green is more than a color at Regent Homes. Our factory built process minimizes waste of materials, transportation, fuel, and power. The waste we do have is then sorted, and recycled into a host of other products. The advantage of building homes simultaneously means that product left from one home can be

used in a home "down the line". This same product would probably end up being tossed out at a site built home. This not only reduces our costs but makes us better stewards of the earth we all share.



Building GREEN

DIVERSITY



Commercial, Industrial, Residential, Multi-Family, Cottages

Regent is the most diversified and flexible manufacturer of off-site built housing in Western Canada. If you can conceive it, we are likely able to build it for you. Talk to your local Regent Home's Retailer about your concept and let us help you achieve it.



Cozy Cottages



Cost Effective Industrial Buildings



Appealing Apartment Buildings

ADVANTAGES OF FACTORY BUILT HOUSING

GUARANTEED PRICE - Once the order is firm, so is the price.

QUALITY CONTROL - The CSA inspection process guarantees that your home has been inspected and tested at every level to ensure our high quality standards.

FLEXIBLE DESIGN - There is a much higher degree of flexibility than you might have thought could

happen in a factory built design and Regent is the best at it.

REDUCED SUBTRADES - A growing challenge in the work place is to find qualified, reliable sub-trades to complete on site projects. Off-site manufacturing greatly reduces these issues.

REDUCED FOOTPRINT - One of the greatest benefits of having your home built in a manufacturing facility is the consolidation of labour and building materials at the factory. Having the majority of the work done offsite greatly reduces the amount of vehicle traffic, noise and pollution at the location your home will be placed. The time frame that contractors need to be onsite is significantly lowered - lessening the impact for you and your neighbors and speeding up the time frame to when you can move into your new home.

REDUCED WASTE - Factories buy large quantities of lumber and other building materials, much of which is ordered to exact fit requirements, there-by reducing waste. Waste that does occur is 50-70% less than when a building is constructed on site and can readily be recycled or disposed of properly.

ENERGY FOOTPRINT - Buildings arrive at destination in one or more large modules that are 85% or greater complete. On site construction activity and the time to completion is dramatically reduced. In addition, the pollutants contained in heating fuels, toxic adhesives and other waste materials that could negatively impact the environment and neighboring properties are dealt with properly at the factory level. Additionally, all of Regent's homes are built to meet or exceed the National Energy Codes (9.36) - ensuring that your new home is built to last and that it is an energy efficient dwelling.

ENERGY PERFORMANCE - Climate controlled factory conditions and assembly line procedures optimize thermal insulation & air/vapour barrier installation, resulting in a tighter and better insulated builder's envelope that requires less energy to heat and cool. For you, that means lower monthly bills!

REDUCED COST - Our factory built process can save you up to 25% on your building costs through plant efficiencies, large buying power, reduced waste and reduced bridge financing costs.



Building in a climate controlled environment reduces costs by protecting materials from the elements



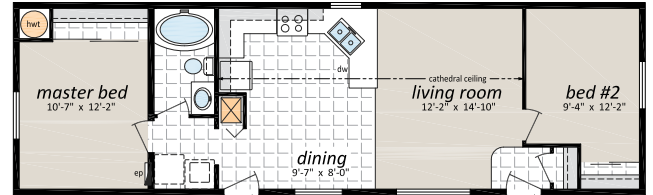
NORTHWOOD II - Single Section Homes

How do you build a highly affordable home and yet not reduce the quality? In a Factory Built home, that is achieved through simplicity and repetition. The Northwood II home plans come from highly successful designs that meet a wide range of needs.

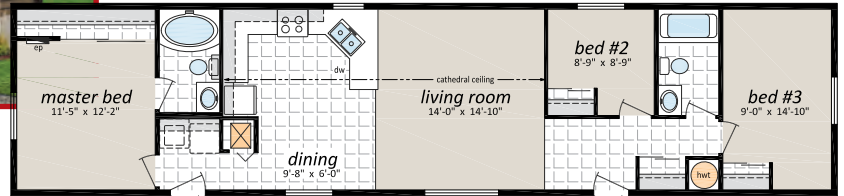
Then we packed each model with a number of standard features that are often upgrades on other homes (you can still add other features). We limit the design modifications permitted and then we deliver the best value in the marketplace. There are several models available in 16', 20' and sectional 28' homes.



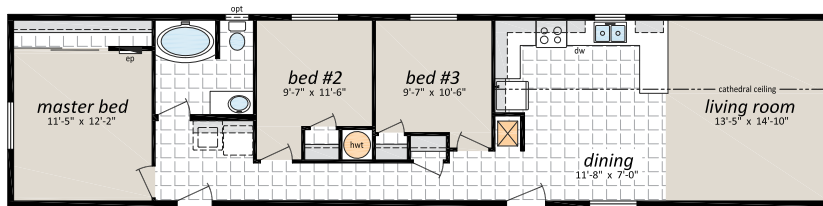
The NII-11 shown with optional exterior features



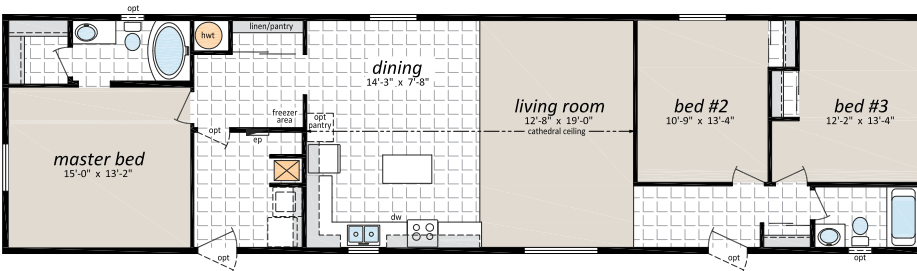
NII-09, 16' x 52', 832 Sq. Ft., 2 Bedrooms, 1 Bath



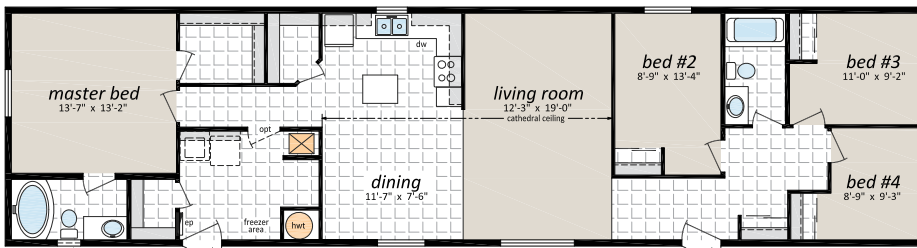
NII-11, 16' x 68', 1,088 Sq. Ft., 3 Bedrooms, 2 Baths



NII-15, 16' x 68', 1,088 Sq. Ft., 3 Bedrooms, 1 Bath



NII-223, 20' x 76', 1,520 Sq. Ft., 3 Bedrooms, 2 Baths

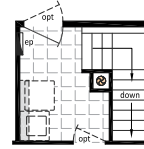
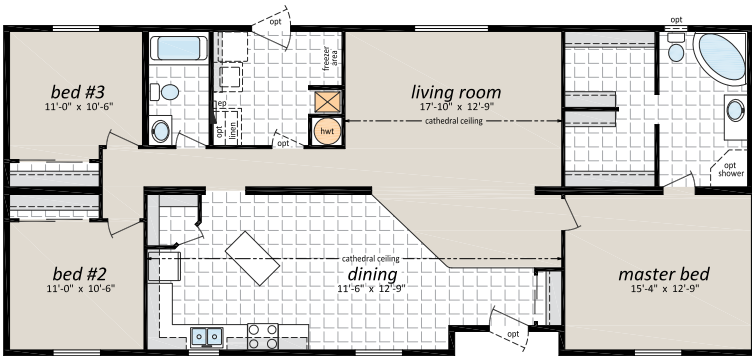


NII-229, 20' x 76', 1,520 Sq. Ft., 4 Bedrooms, 2 Baths



NORTHWOOD II - Sectional Homes

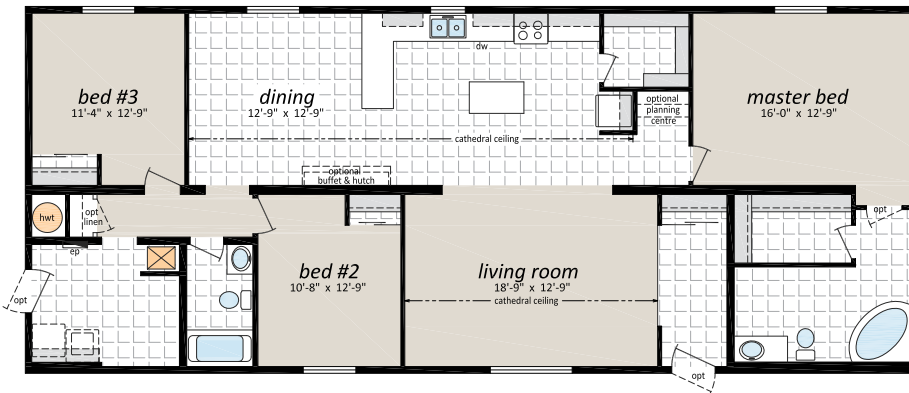
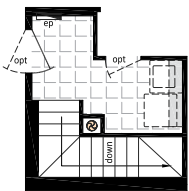
Enjoy more options and more floorspace with the sectional Northwood II homes. Same great value; just more to offer, and the option to place these homes on a foundation for even more space!



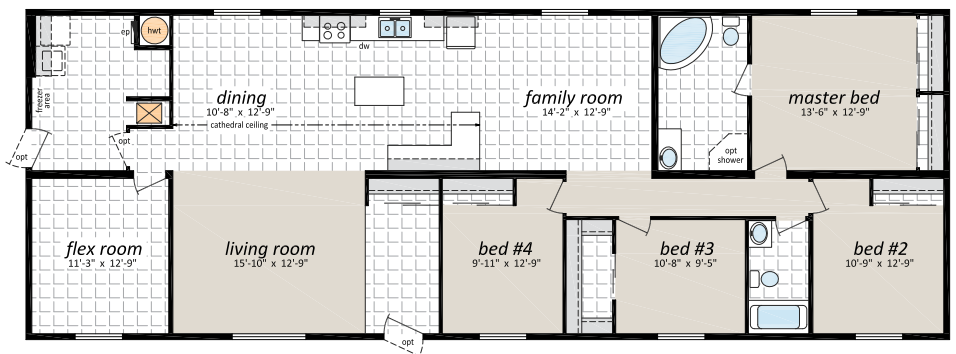
NII-313, 28' x 62', 1,736 Sq. Ft., 3 Bedrooms, 2 Baths



The NII-313 shown with optional exterior features



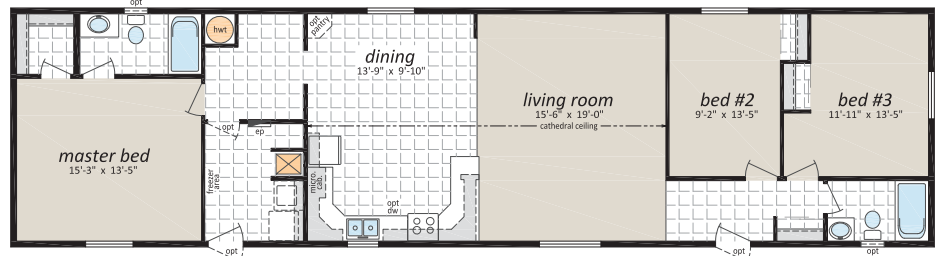
NII-317, 28' x 66', 1,815 Sq. Ft., 3 Bedrooms, 2 Baths



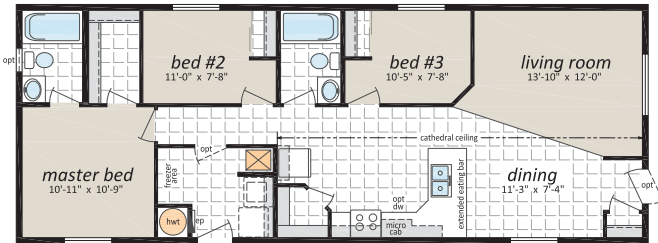
NII-319, 28' x 76', 1,815 Sq. Ft., 4 Bedrooms, 2 Baths

CJ Series 20'

Our most popular line of homes is found in the CJ Series which was named after our company founder, Carl Johnson. These homes range from 1,000 s.f. to over 1,500 s.f. with up to 4 bedrooms and 2 baths. This series offers a full range of options and can be customized to fit your specific requirements. The CJ series is the only home in the marketplace that offers the 12" Engineered I joist floor as a standard feature. When you couple this with a heavy gauge steel frame and our unique laminated wall system, the result is an industry leader in strength and quality.



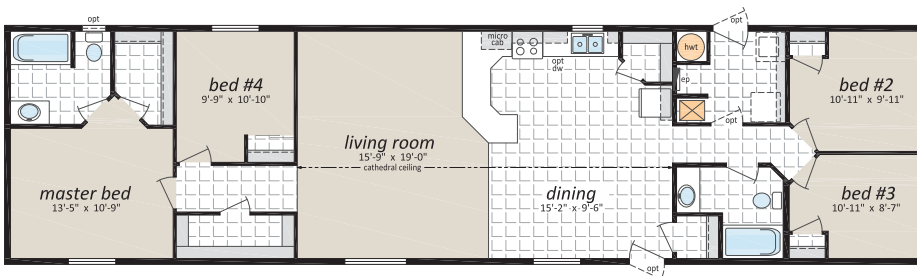
CJN-3000, 20' x 76', 1,520 Sq. Ft., 3 Bedrooms, 2 Baths



CJN-3009, 20' x 52', 1,040 Sq. Ft., 3 Bedrooms, 2 Baths



The CJN-3014 shown with optional exterior features

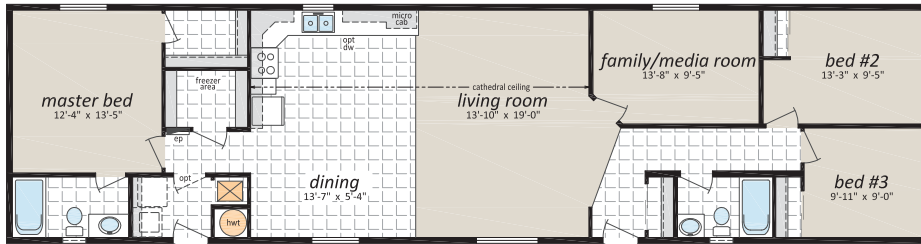


CJN-3014, 20' x 76', 1,520 Sq. Ft., 4 Bedrooms, 2 Baths

Consult your Retailer for other plans that would suit your specific needs or custom design your own plan.

CJ Series 20'

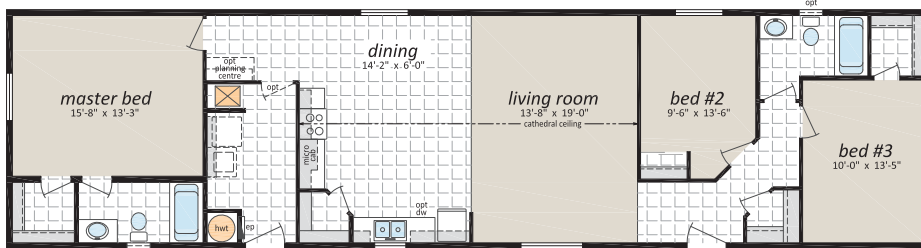
Due to its popularity, and the many configurations available, there are numerous floorplan options offered. See what will work for you! The floorplans below all offer 1,520 square feet of living area, but offer many different variations in layout. See what works for you and your family!



CJN-3011, 20'x 76', 1,520 Sq. Ft., 3 Bedrooms, 2 Baths

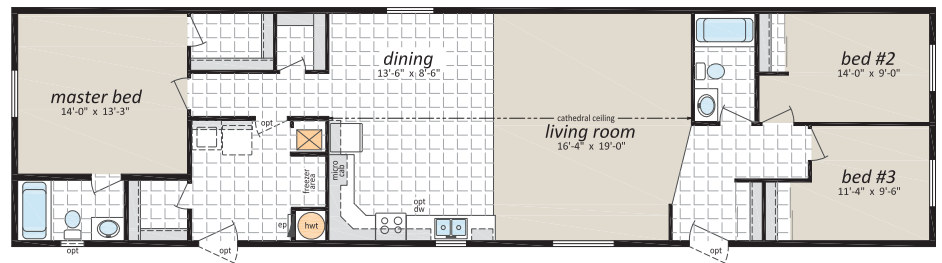


The CJN-3011 shown with optional exterior features

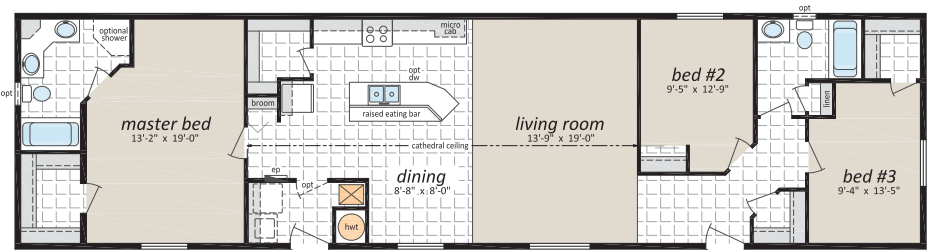


CJN-3015, 20'x 76', 1,520 Sq. Ft., 3 Bedrooms, 2 Baths

Consult your Retailer for other plans that would suit your specific needs or custom design your own plan.



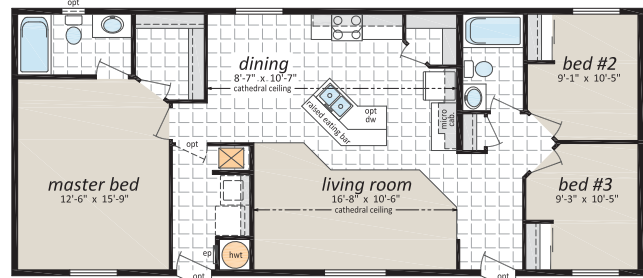
CJN-3018, 20'x 76', 1,520 Sq. Ft., 3 Bedrooms, 2 Baths



CJN-3019, 20'x 76', 1,520 Sq. Ft., 3 Bedrooms, 2 Baths

CJ Series 22'

Keeping with the same theme as the 20' CJ Series, these homes range from 1,000 s.f. to almost 1,700 s.f. and can accommodate extra bathrooms, closets or even a Family Room. We simply increase the width but all the other features and options remain. The extra width offers even more design flexibility.



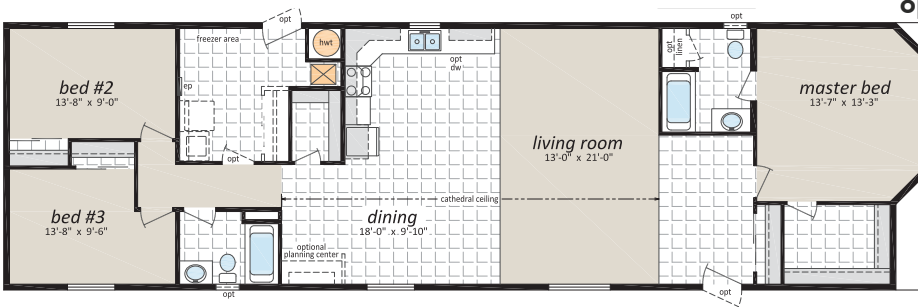
CJN-2205, 22'x 52', 1,144 Sq. Ft., 3 Bedrooms, 2 Baths



CJN-2213, 22'x 76', 1,672 Sq. Ft., 3 Bedrooms, 2 Baths



The CJN-2213 shown with optional exterior features

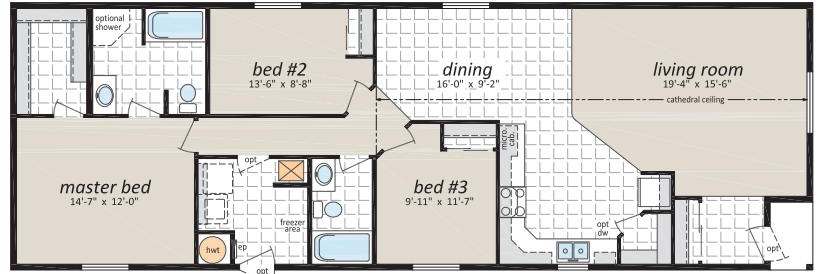


CJN-2215, 22'x 76', 1,672 Sq. Ft., 3 Bedrooms, 2 Baths

Consult your Retailer for other plans that would suit your specific needs or custom design your own plan.

CJ Series 22'

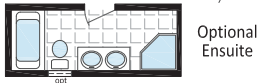
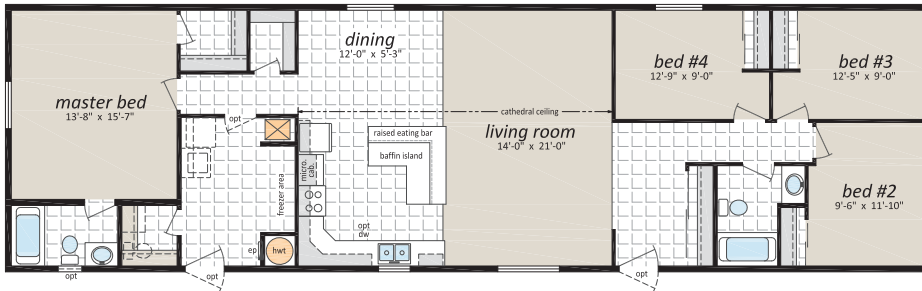
So many floorplans, so many options...



CJN-2207, 22'x 66', 1,452 Sq. Ft., 3 Bedrooms, 2 Baths



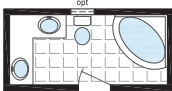
CJN-2213, 22'x 76', 1,672 Sq. Ft., 3 Bedrooms, 2 Baths



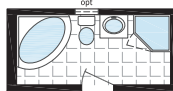
CJN-2217, 22'x 76', 1,672 Sq. Ft., 4 Bedrooms, 2 Baths



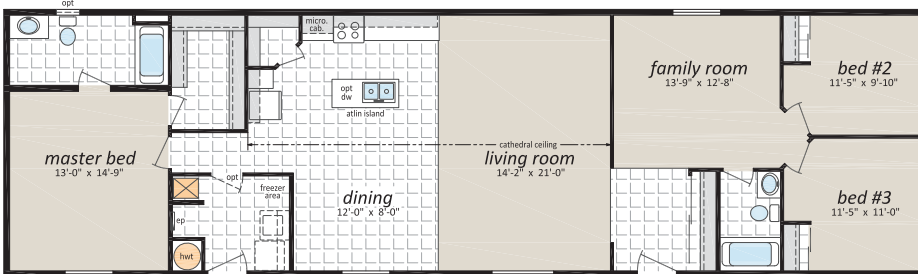
The CJN-2217 shown with optional exterior features



Optional Ensuite A



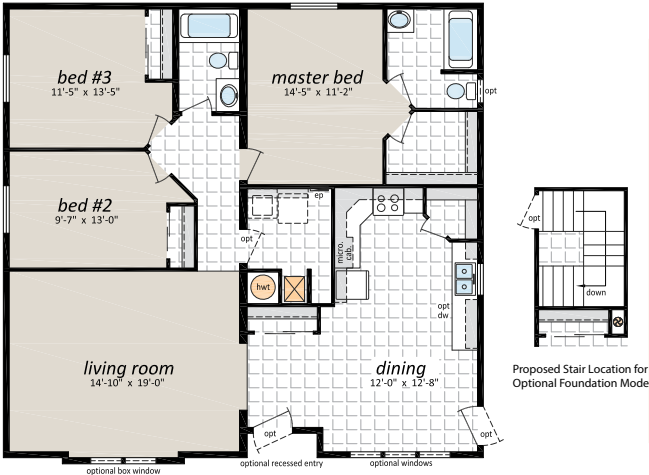
Optional Ensuite B



CJN-2219, 22'x 76', 1,672 Sq. Ft., 3 Bedrooms, 2 Baths

CJ Series 40'

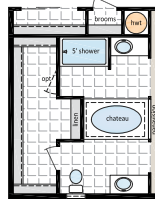
Our most popular line of homes just became even larger and more versatile using two 20' modules to gain more square footage and a truly residential design. These homes can also be designed to go on a basement foundation providing even more square footage!



CJ4037-1, 40'x 37', 1,480 Sq. Ft., 3 Bedrooms, 2 Baths



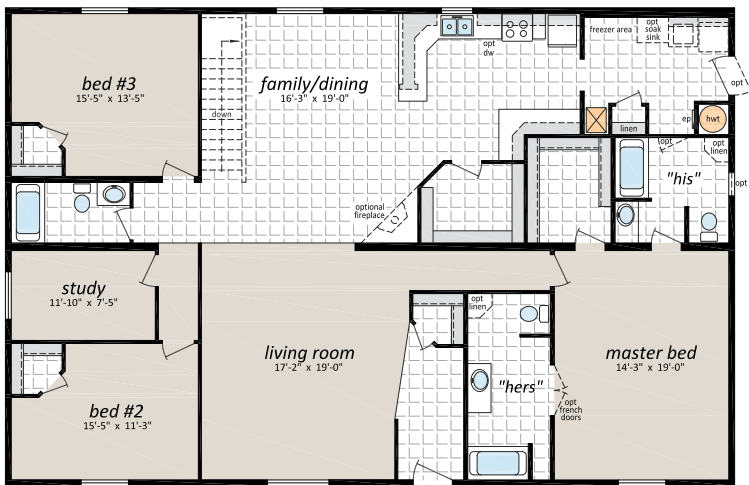
Proposed Stair Location for Optional Foundation Model



Optional Ensuite



CJ4046, 40'x 46', 1,840 Sq. Ft., 3 Bedrooms, 2 Baths



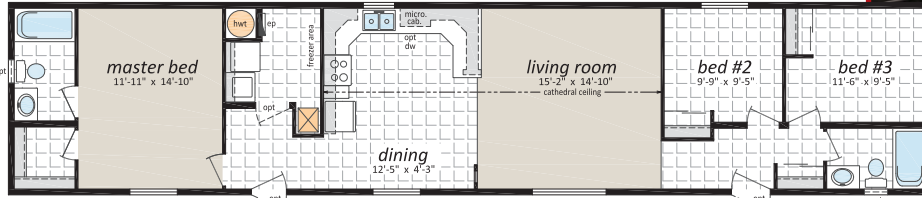
CJ4060, 40'x 60', 2,400 Sq. Ft., 3 Bedrooms, 3 Baths



Consult your Retailer for other plans that would suit your specific needs.

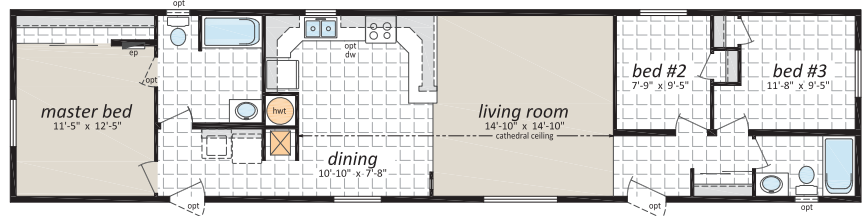
NIAGARA—Single Module

This is a series that has been around for many years and has stood the test of time. We continually improve the design, plans and options but the basic specification is solid.

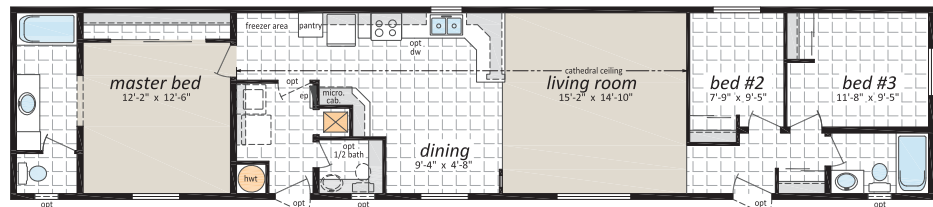


NP-901, 16'x 76', 1,216 Sq. Ft., 3 Bedrooms, 2 Baths

NP-911, 16'x 70', 1,120 Sq. Ft., 3 Bedrooms, 2 Baths



NP-911 shown with Optional Exterior Features



NP-913 16'x 76', 1,216 Sq. Ft., 3 Bedrooms, 2 Baths

NIAGARA—Sectional Homes

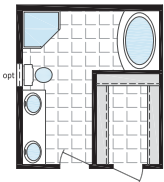
This series also offers sectional homes with more square footage and more options, but with the same great affordability.



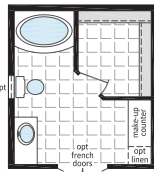
**NP-1105, 27'6" x 52', 1,430 Sq. Ft.,
3 Bedrooms, 2 Baths**



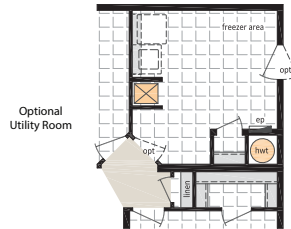
**NP-1155, 26' x 52', 1,352 Sq. Ft.
3 Bedrooms, 2 Baths**



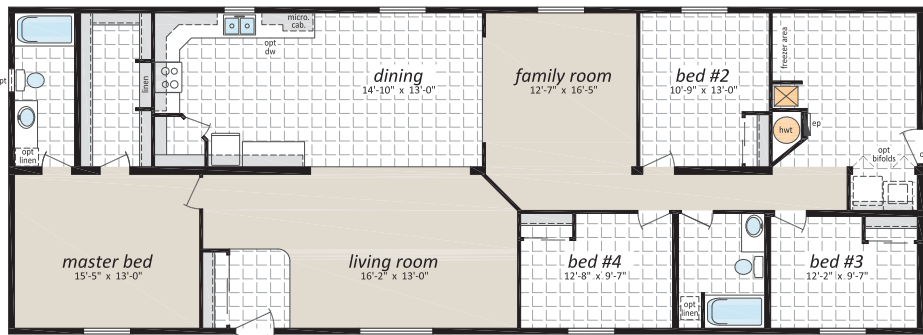
Optional
Ensuite



Optional
Ensuite



Optional
Utility Room



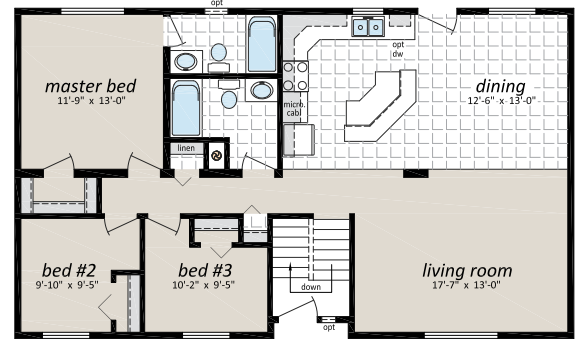
NP-1113, 27'6" x 76', 2,090 Sq. Ft., 4 Bedrooms, 2 Baths



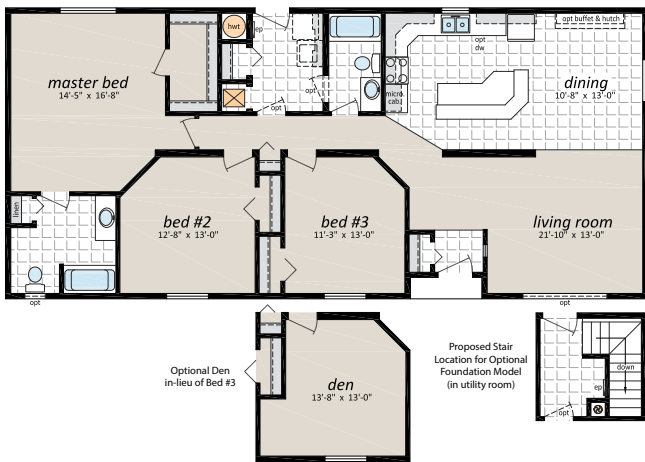
NP-1155 shown with Optional Exterior Features

“RESIDENTIAL”

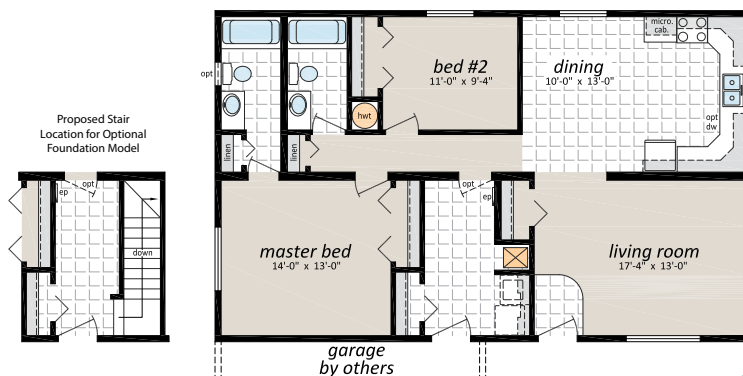
Our “Residential” Series is tried and true. If you are even thinking about site-building a new home, you will want to get all the details from your Regent Homes Retailer about this product. The fully painted drywall interior set on an engineer designed, open web truss floor will check off all the boxes and still allow both the versatility and affordability of a factory built home.



NSM-733F, “The Penhold”
27'6" x 46', 1,265 Sq. Ft., 3 Bedrooms, 2 Baths
Shown with Optional Exterior Features



NSM-739A, “The Longview”
27'6" x 60', 1,650 Sq. Ft., 3 Bedrooms, 2 Baths



NSM-737A, “The Nordegg”
27'6" x 44', 1,210 Sq. Ft., 2 Bedrooms, 2 Baths
Shown with Optional Exterior

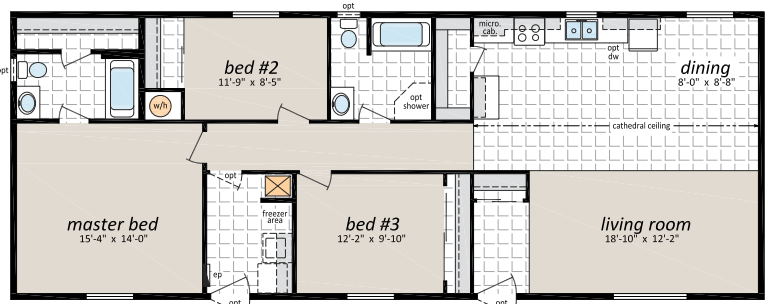


Consult your Retailer for other plans that would suit your specific needs or custom design your own plan.

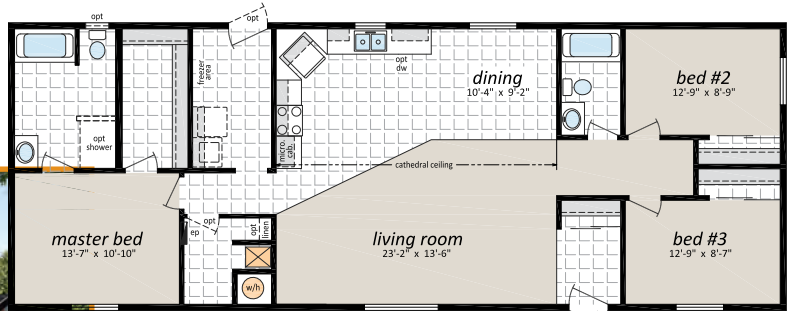
RTM (24')

Our unique factory facility is able to go beyond the norm and offer a single section modular home that is 24' wide and up to 72' in length which offers close to 1,700 square feet.

The design possibilities are endless. Using an engineered open web truss floor design means these homes are readily adaptable to a full basement or a perimeter crawlspace. Talk over your needs with your local Regent Homes Retailer.



RTM-24005, 24' x 62', 1,488 Sq. Ft., 3 Bedrooms, 2 Baths



RTM-24001, 24' x 64', 1,536 Sq. Ft.
3 Bedrooms, 2 Baths
 Shown with Optional Exterior Features

RTM-24011, 24' x 62', 1,488 Sq. Ft.
3 Bedrooms, 2 Baths



Opt'l
 Ensuite

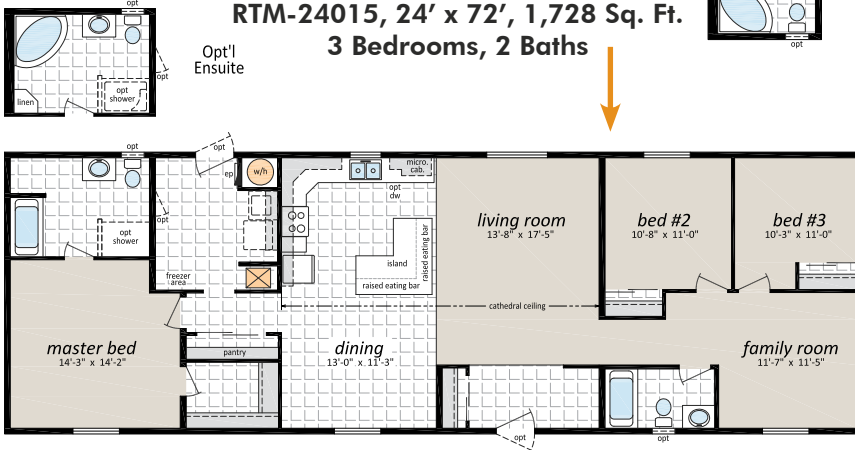


We had ours built for a full basement and then we added a garage.



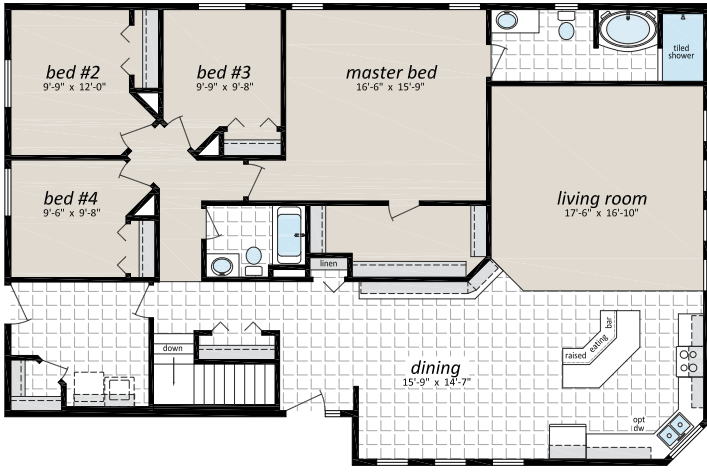
RTM-24015, 24' x 72', 1,728 Sq. Ft.
3 Bedrooms, 2 Baths

Opt'l
 Ensuite



ACCENT RTM

RTM stands for Ready To Move.. These homes are moved on house moving transportation systems which blow open the possibilities of size and design possibilities.. Here are a few possible designs that we have available however, the sky is the limit. We would love to help you design and install your new dream home.



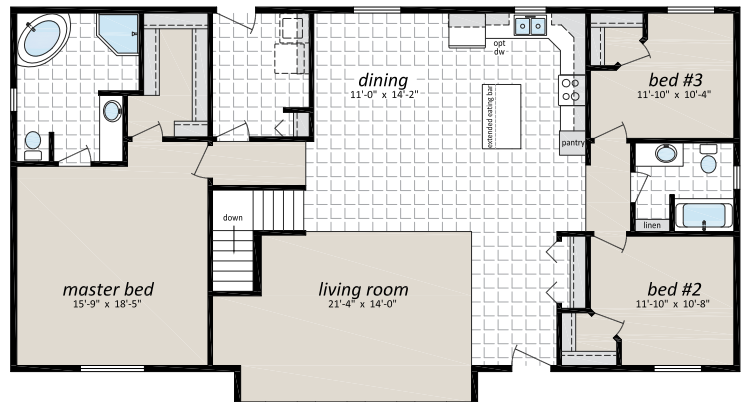
ACC 3858, "The Cardiff"
38' x 58', 2,074 Sq. Ft.
4 Bedrooms, 2 Baths
 Shown with Optional Exterior Features



Consult your Retailer for other plans that would suit your specific needs or custom design your own plan.



ACC 3260, "The Winchester"
32' x 60', 1,860 Sq. Ft.
3 Bedrooms, 2 Baths
 Shown with Optional Exterior Features



Decor

Once the floorplan is chosen for your new home, then you start choosing the decor options that will make the home yours. Regent Homes offers three distinct decor groupings; Coffee, Harvest and Platinum. Within each of these groupings, are different choices for such items as cabinetry, floor coverings, backsplash and draperies.

Regent is proud to offer their products from well known suppliers giving you the confidence of quality products in your new home.



The decor choices that you make, will define the personal look of your new home!

Can we mix and match?



Of course you can, it's your home!



Factory Built Housing Product Guide



CANADIAN STANDARDS
ASSOCIATION



SRI REGENT
131 Stubb Ross Road
Lethbridge, AB T1K 7N3
www.sriregent-northland.ca

Retailer Information: