



www.sriregent-northland.ca



STANDARDS & SPECIFICATIONS

EXTERIOR

- ✓ Colour coordinated metal fascia
- ✓ Vinyl siding and White Vinyl Soffit
- ✓ 4/12 pitch roof
- ✓ Exterior GFI receptacle - front door
- ✓ Exterior frost-free tap – kitchen sink
- ✓ 30-year architectural fiberglass shingles
- ✓ 7/16" roof sheathing
- ✓ 16" eave on HE, 12" on long walls
- ✓ Separate receptacle for heat tape
- ✓ Engineered roof trusses to 2.7 KPA snow load
- ✓ 14 & 16 wide's: 2x10 joists at 16" o.c. and 12" tubular frame
- ✓ 20 & 22 wide's: 12" Engineered I-Joists at 16" o.c.
- ✓ 24 wide's: 14" open web joists at 19.2" o.c. with double LVL
- ✓ 3/8" wall sheathing on inside & outside of exterior walls
- ✓ Insulation: R22 walls; R40 ceiling (24 wide's R44); R48 floor
- ✓ 2x6 side walls at 24" o.c. - 8' walls
- ✓ 19/32" T&G subfloor
- ✓ 12" tubular steel frame with detachable hitch (Except 24' models)

KITCHEN

- ✓ Adjustable shelf in all cabinets – (2) upper & (1) lower
- ✓ Double stainless-steel sink
- ✓ Roller drawer slides
- ✓ PVC cabinet doors
- ✓ 18 cu. ft. frost free refrigerator
- ✓ 30" electric range with clock and timer
- ✓ 2-speed range hood with light and fan vented to exterior
- ✓ White kitchen appliances
- ✓ Communication box (*empty*) at kitchen area
- ✓ Single lever faucet with vegetable sprayer
- ✓ Upper corner cab – narrow reed glass
- ✓ Microwave cabinet with separate circuit (*most models*)

UTILITIES

- ✓ Plumbed and wired for washer/dryer (*some models*)
- ✓ Natural gas high efficiency furnace
- ✓ Dryer vent rough in
- ✓ Electric hot water tank
- ✓ Overhead solid shelf at washer/dryer area
- Insulated lines in HWT cavity

BATHROOM

- ✓ Exhaust fan with humidistat in main bath
- ✓ Exhaust fan in ensuite on separate switch
- ✓ Towel bar and towel ring (*most models*) in each bath
- ✓ Cosmetic box in main bath
- ✓ Showerhead in all baths
- ✓ Showerhead and rod in all baths
- ✓ GFI receptacle in all baths
- ✓ Walled tub/shower with single lever pressure balanced faucet in all baths
- ✓ Single lever faucets in all baths
- ✓ Theatrical lights in all baths

INTERIOR

- ✓ Cathedral ceiling throughout (*Including Deck*)
- ✓ Decorative vinyl covered drywall
- ✓ 6 mil. vapour barrier includes switches and receptacles
- ✓ Plush carpet in Bedrooms only
- ✓ Quality vinyl floor covering
- ✓ Ceiling lights in all bedrooms
- ✓ Wire only ceiling light in living room
- ✓ Pendant light in dining room
- ✓ Solid shelving in all closets
- ✓ White embossed passage doors with lever handles
- ✓ 4" ceramic tile backsplash at kitchen and vanities with tile edging
- ✓ 2x4 interior walls
- ✓ Vinyl wrap moulding throughout

EXTERIOR DOORS & WINDOWS

- ✓ Insulated steel exterior doors, 36" front and rear (*where possible*) with peepholes and deadbolts with lever door handles
- ✓ Coach lights at all exterior doors
- ✓ Covered decks receive exterior pot light ILO std coach light
- ✓ LowE PVC windows and sills with screens
- ✓ Specialty windows as per plan (*some models*)

MISCELLANEOUS

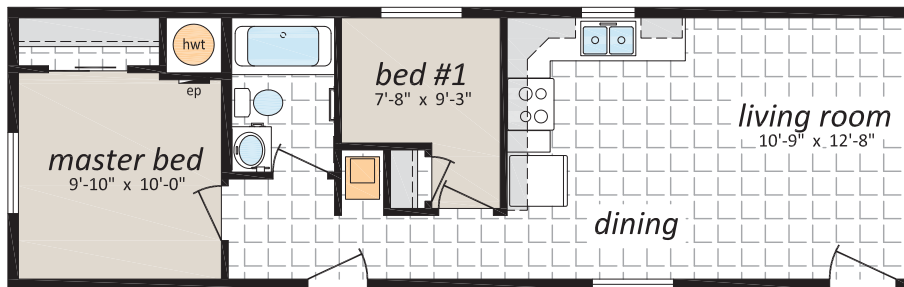
- ✓ Electric smoke/CO detector(s)
- ✓ 100-amp service panel
- ✓ Main electrical conduit through floor
- ✓ White receptacles and switches
- ✓ Light bulb package
- ✓ Programmable thermostat
- ✓ Airtight Protocol

14' WIDE
HOMES

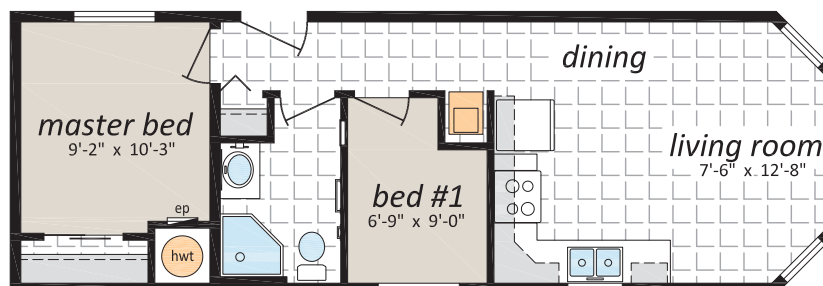


ARBOUR
COTTAGE
SERIES

FRASER, 14' x 44' - 616 sq. ft.



HAWTHORN, 14' x 40' - 560 sq. ft.

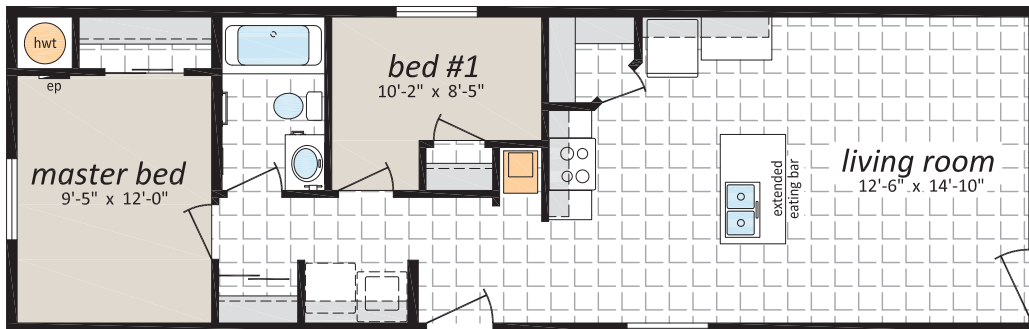


16' WIDE
HOMES

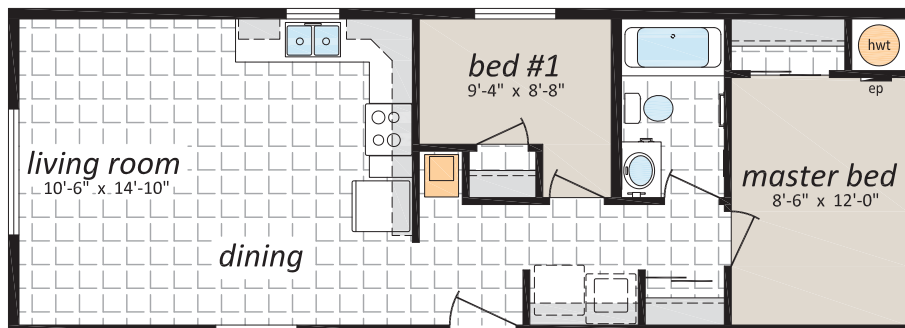


ARBOUR
COTTAGE
SERIES

DOUGLAS, 16' x 50' - 800 sq. ft.



SHASTA, 16' x 44' - 704 sq. ft.

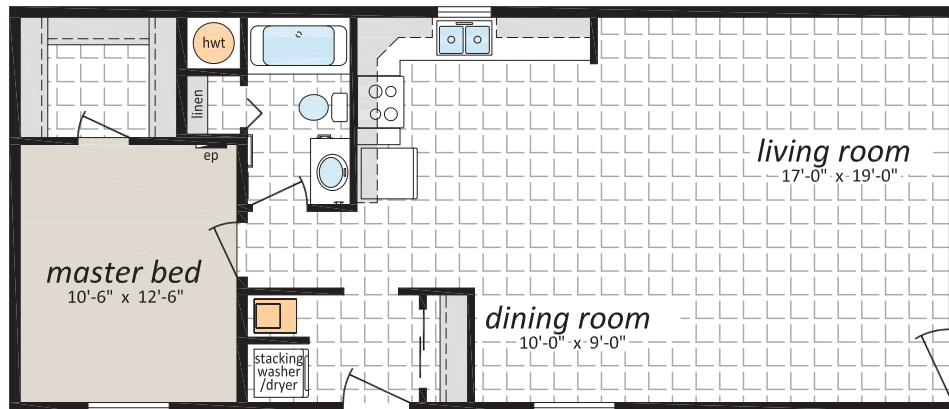


20' WIDE
HOMES

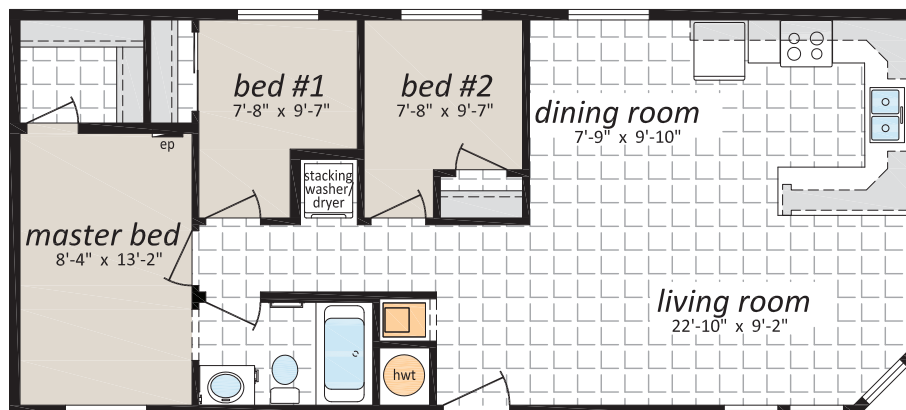


ARBOUR
COTTAGE
SERIES

ASPEN, 20' x 46' - 920 sq. ft.



BIRCH, 20' x 44' - 880 sq. ft.



20' WIDE
HOMES



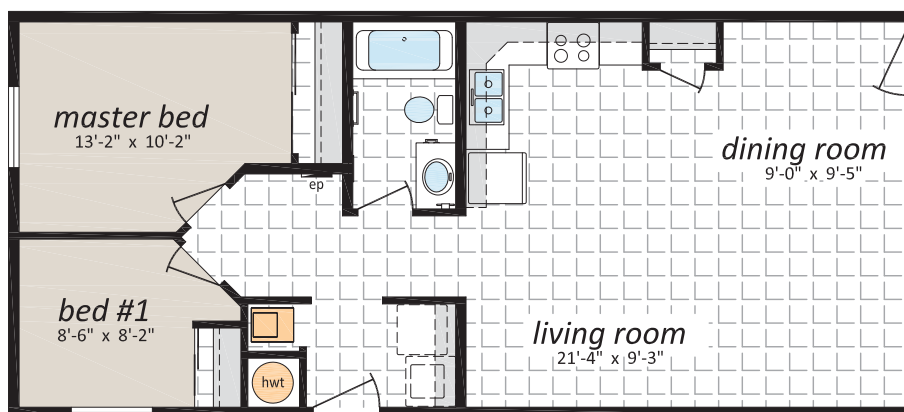
ARBOUR
COTTAGE
SERIES

CAROLINA, 20' x 58' - 1,160 sq. ft.



MONTEREY, 20' x 44' - 880 sq. ft.

Note: rendering shown on coverpage

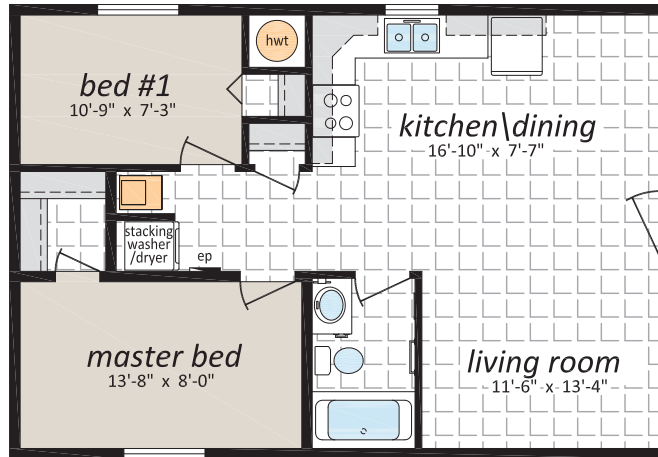


**22' WIDE
HOMES**

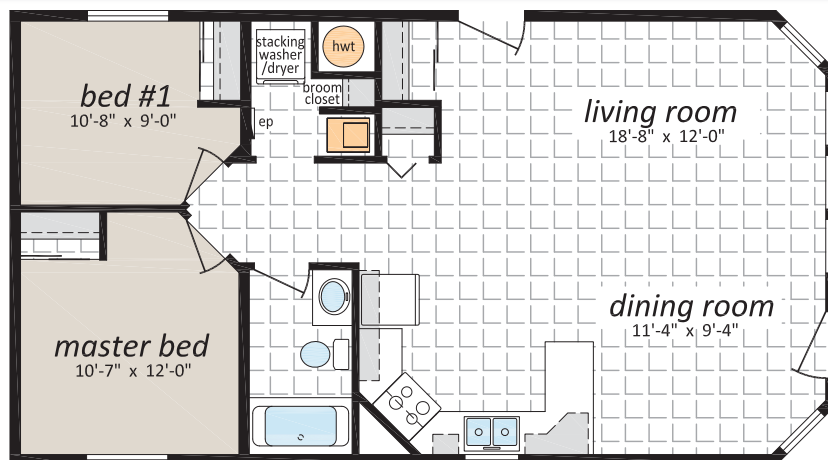


**ARBOUR
COTTAGE
SERIES**

LOGGEPOLE, 22' x 32' - 704 sq. ft.



PEPPERIDGE, 22' x 40' - 880 sq. ft.

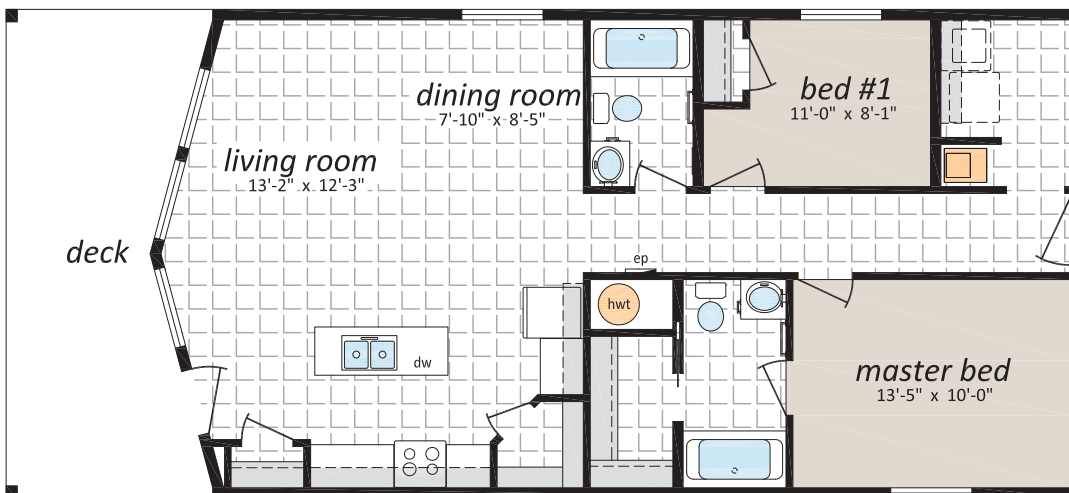


24' WIDE
HOMES

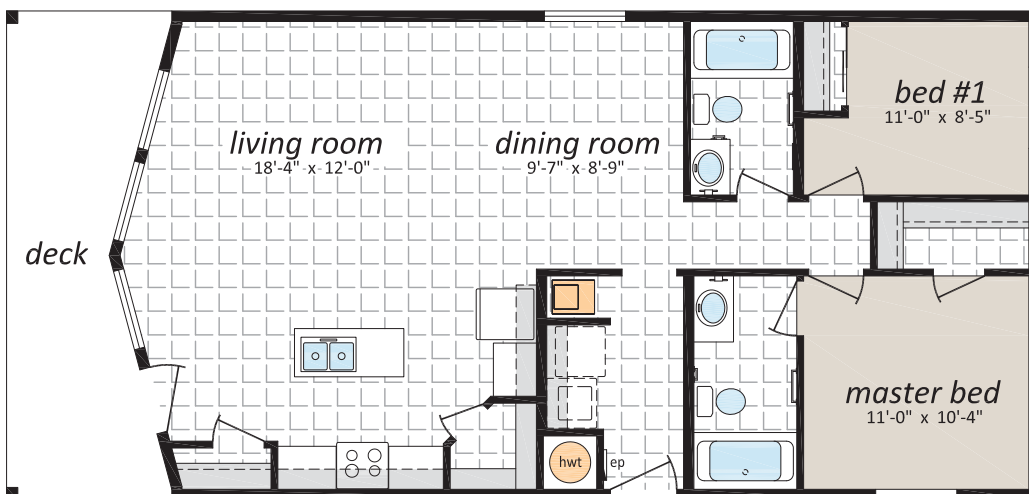


ARBOUR
COTTAGE
SERIES

COTTONWOOD, 24' x 52' - 1,248 sq. ft.



MAPLE, 24' x 50' - 1,200 sq. ft.

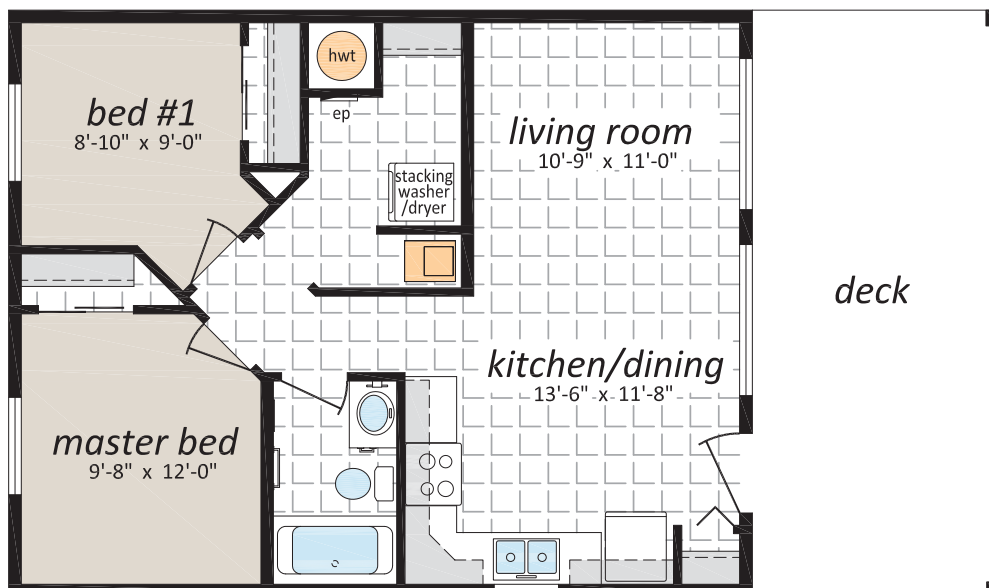


24' WIDE
HOMES



ARBOUR
COTTAGE
SERIES

SEQUOIA, 24' x 40' - 960 sq. ft.

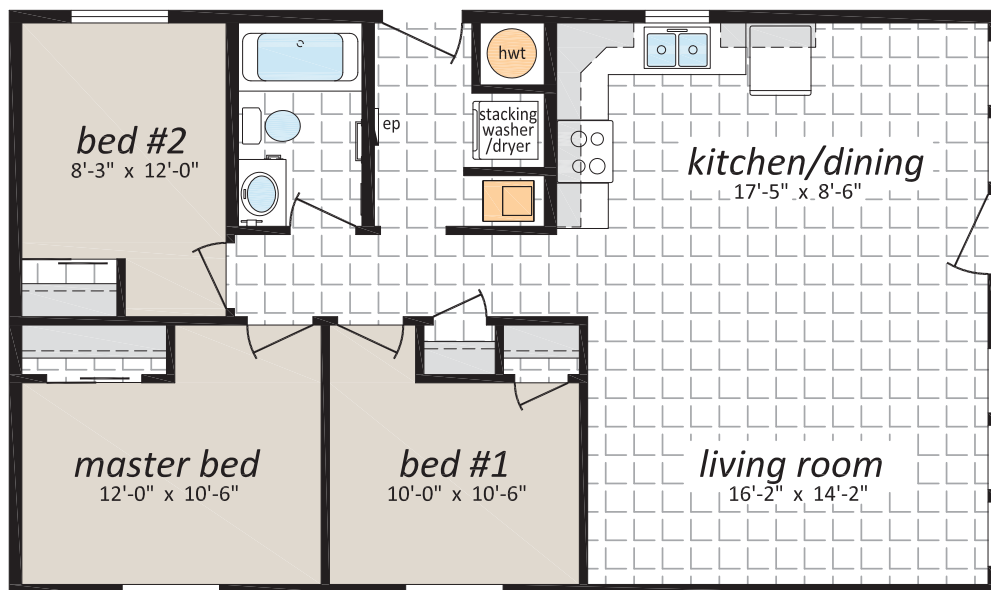


24' WIDE
HOMES



ARBOUR
COTTAGE
SERIES

WILLOW, 24' x 40' - 960 sq. ft.





OPTIONAL FEATURES

EXTERIOR

- ☐ Shutters (Two Styles)
- ☐ Diamond Cut Ceilings
- ☐ Three and Four Light Bay Windows
- ☐ Octagon Windows
- ☐ Segmented Block Windows
- ☐ Lattice in Windows
- ☐ Skylights
- ☐ Patio, Garden and Cottage Doors
- ☐ Storm Doors
- ☐ Exterior Door with Half Round, 9 Lite or Franklin Insert
- ☐ Turbine Vents
- ☐ Door Chimes
- ☐ Exterior Recessed Pot Light(s)
- ☐ Extra Exterior GFI
- ☐ High Snow Load Roof

INTERIOR

- ☐ Fully Finished Drywall
- ☐ Media Room Package
- ☐ Laminate Flooring
- ☐ Upgrade Vinyl Floor Coverings
- ☐ French Doors
- ☐ Storage Bench
- ☐ Freezer Cabinets
- ☐ Soak Sink with Cabinet
- ☐ Utility Room Door
- ☐ Ceiling Fan with Lights
- ☐ Chandeliers
- ☐ Recessed Fluorescent Lights
- ☐ Under Counter Lighting
- ☐ Archways

BATHROOM

- ☐ 72" Tub/Shower
- ☐ Corner Oval Jetted Tub
- ☐ 2 Person Jetted Tub
- ☐ 36", 48" or 60" Shower c/w Glass Doors
- ☐ Handicap Toilet
- ☐ Tri-Mirror Medicine Cabinet
- ☐ Grab Bars
- ☐ Deluxe Shower Curtain
- ☐ Banjo Countertop on Vanity

KITCHEN

- ☐ Various Cabinet Door Selections
- ☐ Wand Style Deluxe Single Lever Kitchen Faucet
- ☐ Corner Glass Cabinet Doors
- ☐ Island Work Centre
- ☐ Planning Centre
- ☐ Lazy Susan
- ☐ Granite Composite Upgrade Sink
- ☐ Oak Counter Edging
- ☐ Black or Stainless Appliances
- ☐ Built-In Dishwasher
- ☐ Combination Microwave/Range Hood
- ☐ Eye Level Oven and Cook Top Range
- ☐ Self Cleaning Range
- ☐ Two Door Side by Side Refrigerator

UTILITIES

- ☐ Gas Fireplace c/w Air Circulating Fan
- ☐ 40 Gallon U.S. Gas Water Heater
- ☐ Forced Air Electric Furnace
- ☐ Air Conditioner-Ready Furnace
- ☐ Washer and Dryer
- ☐ Stacking Washer and Dryer
- ☐ Central Vacuum System
- ☐ Roughed in for Central Vacuum
- ☐ 200 Amp Service Panel
- ☐ Extra Telephone Jack(s)





131 Stubb Ross Road
Lethbridge, AB T1K 7N3
www.sriregent-northland.ca